



ISSUE 21

**AUTUMN 2014
SEPT/OCT/NOV**

FURNITURE SCHEME NEWS!

F R E E — PLEASE TAKE A COPY



See more on page 6

The Furniture Scheme is a dynamic social enterprise and charity. We collect donated furniture and re distribute to people in need.

We manage two Community Centres and support other Social Enterprises.

We offer a range of volunteering and training opportunities across all of our sites.

We are passionate about relieving poverty, protecting the environment, enabling the disadvantaged and encouraging a thriving Social Enterprise sector.

Inside this issue:

Snapshot of the Furniture Scheme	2
Chris Christie with Volunteer Voices	3-4
Jean Jarvis MBE CEO & James Cooper, General Manager	5-6
Community News	7-10
Volunteering with the Furniture Scheme	11
Dormouse Boxes at Witley Court	14
Rockspring Community Centre	16-18
Craven Arms Community Centre—CasCA	19-21
Sure Start	23
The FS Staff and where they work	24

YOUR SUGGESTIONS AND IDEAS COUNT !

The Winter edition will be out at the end of November, if you have something to include, do let me know! Would you please send contributions by Friday 14th November 2014.

Elaine Duggan 01584 874922
elaine@furniturescheme.co.uk



SNAPSHOT OF THE FURNITURE SCHEME

What happens where...

RE-USE CENTRE, WEEPING CROSS LANE, LUDLOW

Mon—Fri 10am—4pm, Sat 10am—2pm

- ⇒ Trading site
- ⇒ Computer recycling workshop
- ⇒ Wood & Metal recycling facility
- ⇒ Bulky waste base
- ⇒ Removal of handles, knobs, hinges and screws for re-use
- ⇒ Volunteering and placement opportunities
- ⇒ Recycling point for mobile phones, ink cartridges and household batteries
- ⇒ Donation point
- ⇒ Two vans based here
- ⇒ Recycling Banks for textiles, wood & metal
- ⇒ Tools for Africa collection point



RENAISSANCE CENTRE, 7-8 TOWER STREET, LUDLOW

Mon—Sat 9.30am—5pm

- ⇒ Head office
- ⇒ Trading site
- ⇒ Bookshop and vinyl records
- ⇒ Flea Market
- ⇒ Information Board
- ⇒ Volunteering and placement opportunities
- ⇒ Household battery recycling point
- ⇒ Donation point



ROCKSPRING COMMUNITY CENTRE, SANDFORD ROAD

Mon—Fri 9am—5pm

- ⇒ Volunteering and placement opportunities
- ⇒ Rooms for hire
- ⇒ Events and activities
- ⇒ Donation point for clothing, textiles, books etc



FRIARS WALK, LUDLOW MASCALL CENTRE, LOWER GALDEFORD

- ⇒ Carpentry workshop
- ⇒ Furniture restoration
- ⇒ Training facility
- ⇒ Training, volunteer and placement opportunities available
- ⇒ One van based here



CasCA, NEWINGTON WAY, CRAVEN ARMS Mon—Fri 9am—10pm - by arrangement at week ends

- ⇒ Volunteering and placement opportunities
- ⇒ Rooms for hire
- ⇒ Events and activities
- ⇒ Donation point for clothing, textiles, books etc



OUR WONDERFUL VOLUNTEERS!



Di Hyde - Work Placement Officer 01584 877751
diane@furniturescheme.co.uk

Hello Everyone!

Sorry I don't have a photograph of myself to put in this space so for the moment I'll have to remain the invisible woman!

Let me introduce myself. My name is Di Hyde and I'm Chris Christie's replacement. Chris did a wonderful job as Work Placement Officer and will be a hard act to follow—but I'll do my best.

My background is mainly in supporting people into employment. Having worked for Job Centre Plus for many years I went on to work for Hereford College, County Training and Shaw Trust.

In addition to my work for the Furniture Scheme I volunteer as a Citizens Advocate for OSCA (Oswestry & Shrewsbury Citizens Advocacy).

In my spare time I enjoy walking my dogs and caring for my three rescue horses and one very stubborn donkey.

I would like to say a big thank you to the lovely staff here who've been extremely kind and supportive to this 'new girl'.

Thank you also to the wonderful volunteers I've met so far—you've been very patient.

I look forward to meeting and getting to know everyone in the very near future.

Now it's over to ... **Volunteer Voices**

Volunteer Voices

Kaya Harris

I started doing my Work Experience here at CasCA on Monday 7th July. I have helped make teas, coffees and sometimes biscuits for the meetings.

I have really enjoyed working here this week. I have learnt a lot about the people in the community and what they are most interested in.

Everyone that works here are very friendly and they will help you out a lot.

Meeting new people has made me more confident in myself. I hope to take this experience away with me for my future employment.

Casey Juckes

I also started doing my Work Experience at CasCA on Monday 7th July and it was great. I helped put out tea, coffee and biscuits for meetings and I also found some books for people to take out or to be passed on to different libraries.

Also, I helped in the kitchen making sandwiches for people at lunch time and I went to the shop to get biscuits for a meeting.

I have really enjoyed working here for the past week. It has boosted my confidence to talk to new people and I hope to take this experience into the future.

A MESSAGE FROM CHRIS CHRISTIE ...



'I wanted to take this opportunity to thank you all for a lovely send off when I left The Furniture Scheme in June, and, in particular, I wanted to thank everyone for the beautiful rose bush and planter which now has pride of place in the garden.

Best wishes to everyone.

Chris Christie



Jean Jarvis MBE—Chief Executive

The Furniture Scheme has always been keen to develop new ideas and initiatives. I think the most recent of these has been the very successful CASCA in Craven Arms, which we've assisted to reach its thriving community centre potential.

We joined the Wrekin Housing Group in April 2013 and since then we've increased the amount of social enterprise development work we do, not only in Shropshire, but in Staffordshire too. We've used our successful community centre model to set up and manage two new community centres in Stafford and Cannock, both open early next year.

The grounds maintenance and cleaning social enterprise we set up in April this year, is developing quickly and now employs four staff and supports two trainees. The quality of the work is so good that we are picking up new work almost weekly. This work provides a useful income stream to help support our charitable and social aims.

If you'd like more information about our social enterprise development company (FUSE) work please contact me.



Pictures in the Ludlow Advertiser of Jean Jarvis MBE with Green party leader Natalie Bennett. Photos: MARK BOWEN

Natalie Bennett visited our Reuse Centre, in Weeping Cross Lane, Ludlow, to meet staff and discuss recycling and the creation of local jobs. The visit also included our Carpentry Workshop in Lower Galdeford to see the repair and refurbishment work taking place.



James Cooper—General Manager

We seem to be busier than ever – there has been a rise in the number of donations we are collecting, our sales are increasing and more and more people are visiting our community centres. The Summer is always a busy time for the Furniture Scheme and our staff have been working incredibly hard to meet the demand for our services. Meanwhile, we have been struggling to maintain our volunteer numbers, especially at our Re-use centre, and we are appealing to the public to get involved with our organisation – it can be a hugely rewarding experience (see page 13 for more details).

We have recently been involved in several local events including Ludlow in Bloom, the Great War window display (see below), Ludlow Charity Market and the 'Party in the Castle' which celebrated 20 years of Ludlow Food Festival and the Furniture Scheme.

After 2 decades of working in the community it is all too easy to rest on your laurels and focus solely on your own work but we are always eager to work with other organisations and get involved in local events and initiatives. We are proud of the vibrant community we work in and over the coming months we will be looking to work more closely with other communities across southern Shropshire.

Finally, we recently joined 'Give as you Live' – it works with 3,673 leading stores that have signed up to donate a commission on every online purchase to the charity of your choice. This commission is already included in the price of what you're buying, so you can support your favourite cause, at no extra cost to you.

We would be very grateful if our supporters would sign up at www.giveasyoulive.com/join/furniturescheme and choose us as your charity.

The money raised through your purchases will help us to continue to relieve poverty, protect the environment and enable people in Shropshire. If you need help to set your account up please get in touch.

RENAISSANCE CENTRE WINNING WINDOW!

We're very pleased to have been named the winner of the window dressing competition to mark the centenary of Britain's entry into the First World War on August 4th 1914.

But we're even more pleased to have contributed to Ludlow's fantastic efforts to remember those who lost their lives and fought for their country 100 years ago.



Community News – By Christine Perkins – Community Engagement Worker

What has been happening out and about – well it has been a busy few months!

20th July saw the Furniture Scheme and Ludlow Food Festival joining together to celebrate both organisations 20th anniversary.

Ludlow Castle was the venue, with the Food Festival sponsoring the event. The weather was perfect, and there were lots of free activities for the family to take part in, and the whole event had a “party in the park” atmosphere.

The Furniture scheme organised the music, which saw Rockspring Community Choir leading the proceedings.

We are very grateful to all the groups who took part and made this event go with a real swing.



The Community Choir has also taken part in the Ludlow Fringe Festival, with a lively programme ranging from show stopping tunes to songs from World War 1, and just recently the choir were asked to support the British Legions commemorations for World War 1.

The choir is taking a well earned rest now, but will be back in tune in September. As always, new members are most welcome to join us on Wednesday evenings at Rockspring Community centre. – See you in September.

Garden News –

Rockspring Community Garden has taken part in the Small gardens weekend, which saw 21 gardens open to the public over the weekend of 26th and 27th July. Over 180 people came to have a look at the vegetable garden and compliment the volunteers for all their sterling work.

Produce from the garden is currently being used in the community lunches, as well as being sold to local sheltered housing schemes, and also processed for use in the Food bank.



The Community Garden entered the Garden Competition sponsored by the South Shropshire Housing Association.

The competition categories were Most Improved Garden, Best Children's Garden, Best Container/Hanging Basket, Best Vegetable Garden and Best Flower Garden. There were over 20 entries for the competition and the judges were very impressed by the standard of entries.

A special category was included for community areas looked after by residents, and Andrew Osborn was presented with a special prize for all his effort and work with the piece of land at the end of Sandpits Avenue.

A prize giving ceremony was held at Rockspring Community Centre, and all competitors were invited to come along and hear what the judges had to say about their gardens!

The community garden managed to scoop first prize in the Best Vegetable category. Many congratulations and thanks for all the work the Community gardeners put into the garden.

A reminder for next year – All gardens taking part in either the Small Gardens Weekend or in the Garden Competition will have priority entry to the plant give away that will be happening again next year – date to be announced in the New Year – Let's get growing!



Tracey Huffer Andrew Orsborn Mike Cotton

Garden competition 2014

Competition winners and runners up:-

Best Community flower Garden – Andrew Orsborn

Best Flower Garden – Michael Cullen

Runner Up – Janet Weaver

Highly Commended awards to

Stephanie Hill

Andrew Orsborn

Michael Cullen

Commended award to

Joan Cross

Claire Pardoe

Tia Schebert

Best Vegetable Garden – Rockspring Community Garden

Runner up – Pauline Johnson

Best Container/hanging basket- Mary Lewis

Runner up – Julie Stannes

Highly Commended awards to :-

Andrew Orsborn

Michael Cullen

Commended award to :-

Janet Tipton

Best Children's Garden – Demi Louise Morse

Runner up – Joseph Hicks

Most Improved garden – Dale Cooper

Runner up – Whitefriars Community Garden

Highly Commended awards to :-

Andrew Orsborn

Barbara Corley

Michael Cullen

Commended award to :

Jackie Beckwith



Whitefriars community gardeners with
Judge Angela Siminson



Prize giving ceremony



Rockspring Handicraft and Produce Show

13th September 2014

Whether you are a beginner or an expert, young or old, why not join in the fun and enter the above competition.

Pick up a schedule and entry form at
Rockspring Community Centre or visit
www.furniturescheme.co.uk

From Handicraft to Photography

Cakes and Chutneys

Children's classes to Funny shaped vegetables

Prizes for the winners of each category.

Entries close Thursday 11th September 2014



FREE
basic cycle
maintenance
workshops
Ludlow 2014

Rockspring Community Centre, Sandford Road Ludlow, SY8 1SX

• Friday 14 February

• Friday 4 April

• Friday 20 June

• Friday 3 October



Suitable for anyone who wants to keep a bicycle in good working order. Learn how to check bicycle safety, repair a puncture and make minor adjustments to your bike to make it ready to ride.

Classes last 3 hours (10am-1pm), are free of charge and are open to people who live, work or study in Shropshire.

For more information and to book your place visit:

www.travelshropshire.co.uk/cycle-maintenance

or contact Ray Hughes, Shropshire Council 01743 253008



transport@shropshire.gov.uk



ASK THE ROCKSPRING!

COMMUNITY DIRECTORY - everything you need to know about your community

www.shropshire.gov.uk/community.nsf



Want to find
Activities for Young People?
ASK THE ROCKSPRING!

Got questions about
Bringing up a Baby?
ASK THE ROCKSPRING!

Need to know about
Mental Health Issues or Disability Support?
ASK THE ROCKSPRING!

Looking for local
Self Help Groups?
ASK THE ROCKSPRING!

Need advice on
Living with Debt?
ASK THE ROCKSPRING!

01584
874922

www.furniturescheme.co.uk

Text: 07896 642018

rockspring@furniturescheme.co.uk

Don't Dump It, Donate It.

Donating furniture to South Shropshire Furniture Scheme is easy and it goes a long way towards helping your community.

Here are some of the items we accept:

Electrical	Kitchen & Household	Living	Bedroom
Fridges	Saucepans	Settees/sofas	Beds
Cookers	Crockery	Armchairs	Chest of drawers
Vacuum cleaners	Cutlery	Coffee tables	Wardrobes
Washing machines	Waste bins	TV stands	Bedside cabinets
Freezers	Washing up bowls	Fireguards	Sheets
Irons	Baking tins	Mirrors	Pillowcases
Toasters	Ironing boards	Pictures	Duvets
Microwaves	Tables	Rugs	Blankets
Lamps	Chairs	Books	Curtains
Televisions	Clocks		
Stereos	Freestanding cupboards		
	Sideboards		

There are 3 things to remember before you get started:

<p>1 We pick-up Mon-Thurs 9am-4pm</p> <p>MON TO THURS</p> <p>* We will contact you to confirm your donation</p>	<p>2 Your item must be in good condition</p>	<p>3 This must be on your sofa*</p> <p>* If you're donating a sofa!</p>
---	---	--

To Donate: Please Call 01584 877788
or go to www.furniturescheme.co.uk
Celebrating 20 years of Giving Back

VOLUNTEERING OPPORTUNITIES WITH THE FURNITURE SCHEME

All of the volunteering opportunities provided by the Furniture Scheme come with full training and an allowance for travel expenses.

10 week placements for a part or full day per week are available in the first instance with opportunities for feedback and review to make sure all is going well for you.

All volunteers have the opportunity to take a qualification and get employability support if required.

For more information on any of these opportunities please contact:

Di Hyde Tel: 01584 874922 or email: diane@furniturescheme.co.uk

CasCA—General Assistants

Newington Way, Craven Arms SY7 9PS

General assistants needed to answer phones, set up the rooms, make refreshments (tea and coffee) and meet and greet.



Waste Management Project

Could you help us to dismantle sofas, washing machines and other items ready for the recycling process? Times to suit you, but you will need to be reasonably fit as it's quite hard work!



Electrical Testing

We would like volunteers to assist with the function testing of the electrical appliances.

You would work alongside a trained member of staff for this role - times to suit you.

Customer Service Assistant



In our shop we need help with answering telephone calls, dealing with enquiries, making sales, using the till and credit card machine, keeping displays looking attractive and using a computer. We are flexible with time as you are being generous with yours, but ideally either 9.30am - 1pm or 1pm - 5pm.

We also need assistants in our Flea Market

Urgently needed at SSFS Re-use Centre

Weeping Cross Lane, Ludlow SY8 1JH

- ◆ customer service assistants
- ◆ warehouse assistants
- ◆ van drivers and van buddies

You will need to be physically fit and able to lift items of furniture.

Rockspring Community Centre

Sandford Road, Ludlow SY8 1SX

We sometimes have volunteer vacancies for:

- ◆ catering assistant
- ◆ caretaker assistant
- ◆ event support assistants



Carpentry Workshop

Lower Galdeford SY8 1RZ

Volunteers carry out a variety of tasks from stripping and polishing donated furniture to more challenging projects. Morning or afternoon sessions available, starting with a half day taster. You will be provided with full workshop training, support and the opportunity to gain a qualification.



twitter

FIND US ON TWITTER & LIKE US ON FACEBOOK !

The Furniture Scheme, Rockspring Community-Centre and CasCA are on Facebook and we welcome anyone who would like to be our friend or like our page!

The Furniture Scheme is also on Twitter which we try to keep regularly updated. Find us at : www.twitter.com/furniturescheme

Also visit our website for more information about The Furniture Scheme and up to date news www.furniturescheme.co.uk

VOLUNTEER TRAINING OPPORTUNITIES

We will be continuing our popular courses in Customer Service, Mental Health First Aid and Carpentry. Details of courses will be displayed at all sites when courses are finalised so please apply for a place quickly to avoid disappointment!

In addition, we continue to offer national Open College Network qualifications via a range of Work Experience modules.

For more information contact: Gill Pitt 01584 874922

IT Support @ Rockspring & CasCA

You can hardly cross the road these days without needing to be able use a computer. Accessing Government and Local Council services – it's called Digital by Default

At Rockspring and CasCA we offer free support and training to help do many of the things you want to do with the computer in a relaxed and jargon-free atmosphere. People have even said "it's fun"!

Help setting up an email account, preparing a CV, learning to use a Word Processor, finding information. Advice on On-Line Security, help with tablets and E-Book readers (up to a point). You learn in small groups with a patient tutor.

And did we mention that it's free? And fun?

SOUTH SHROPSHIRE CARE INFORMATION PROVIDER (SSCIP) COMMUNITY DIRECTORY

If anyone would like information on where to access a support group or information on a health or care related issue, please contact Elaine Duggan on **01584 874922** Monday – Friday 9am – 5pm, or call into Rockspring Community Centre. Alternatively you can access the Community Directory at: www.shropshire.gov.uk/community.nsf
If you know of a group which is not on there and you feel should be, please let me know.



SCD
Shropshire
Community Directory



RE-USE CENTRE, WEEPING CROSS LANE

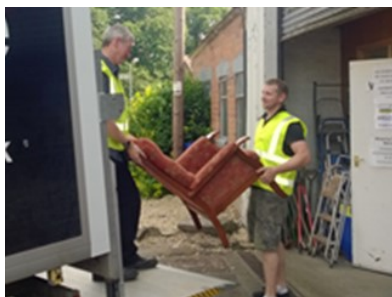
TO DONATE FURNITURE PLEASE TELEPHONE: 01584 877788

The Re-use Centre has a wide range of household items from washing machines and cookers, refrigerators, tables, chairs, sofas, lamps, beds, mattresses, crockery etc at reasonable prices and is open to the general public, not just people on benefits.

New volunteers... we need you!

We urgently need new volunteers at our Re-use Centre in Ludlow

If you want to give something back to your community, gain valuable work experience, meet new people and help a local charity, why not volunteer. Our working hours are Monday to Friday 8:30am—4:30pm and Saturdays 10am—2pm. We are particularly looking for people able to commit to a day a week (but half a day is still useful!) and willing to help move heavy furniture, assist our van drivers and work hard!



We are able to reimburse travel costs up to £10 and pay up to £3 for your lunch (if you stay for the whole day).

For more information contact Di Hyde on 01584 877751 or diane@furniturescheme.co.uk

**The Re-use Centre is open: Monday—Friday 10am—4pm & Saturday 10am—2pm
Do call in and have a browse, all welcome!**

STATISTICS FOR MAY/JUNE/JULY 2014

May:	Collections..... 132	374 items.....	10,826 kgs
	Deliveries.....102.....	367 items.....	9,311 kgs
June:	Collections.....113.....	388 items.....	10,022 kgs
	Deliveries.....87.....	480 items.....	11,655 kgs
July:	Collections.....127.....	390 items.....	11,499 kgs
	Deliveries.....107.....	483 items.....	12,277 kgs

Dormouse Boxes at Witley Court.

I became Head Gardener at Witley Court for English Heritage in 1999. Whilst doing some research into the area I found out that there were dormice in the nearby Wyre Forest. Having managed a garden in Devon where there were dormice, I had some idea of the requirements of these shy creatures and started to manage the peripheral areas, shelter belts etc. at Witley with a view to providing the right conditions for them.

We planted lots of hazel and we started a programme of sequential coppicing to ensure that we had plants at all stages of growth to provide food and shelter for the dormice. We also planted lots of honeysuckle, for food and nest material, and stacked timber and brash to provide more cover. I found my first dormouse nest in 2007 and was delighted that our maintenance regime was having the desired effect.

Last year whilst I was working in the shelter belt with a volunteer group of young people with learning difficulties one of the volunteers found another nest on the ground. Whilst pleased at this, after doing some more research, I was concerned that the dormice nesting on the ground might be vulnerable to predators so we decided to put up some nest boxes.

I had heard that the Furniture Scheme workshop had made bird boxes so contacted them to ask if they could make us 20 dormouse boxes. The workshop were very keen to help so I sent them plans of the boxes I needed and was very soon informed that they were ready.

I picked up the boxes in July and half of them have already been put in position in readiness, hopefully for the dormice to use them next spring. The plan is ultimately for members of the gardens team at Witley to attend courses and gain certificates so that they can monitor the dormouse population on the site and we hope to set up a scheme so that visitors to the gardens can sponsor a box to help with funding for this training.

Richard Squires—Head Gardner, Witley Court





THE RENAISSANCE CENTRE

The Renaissance Centre provides 'reborn' items for the household. Donated items are imaginatively rejuvenated to a condition worthy of resale.

The Book Shop selling good quality good value books and a wide selection of rare books and 1st editions. Paperback fiction is always needed as well as interesting non-fiction and quality children's books.

The Flea Market! this is a great opportunity for vendors of antiques, collectables, upcycled items and handmade objects. Now open on Sundays 10am—4pm.

The Renaissance Centre is open Monday—Saturday 9.30am—5pm.
For more information telephone 01584 877751

CARPENTRY WORKSHOP

Did you know our Carpentry Workshop team can carry out repairs and restoration to your furniture for a small fee?

We also make bird boxes, bee boxes and house name plaques.

For more information contact the team on 01584 877706.



Reviive in Shrewsbury



Unit 4, Knights Park, Battlefield Enterprise Park,
Shrewsbury SY1 3AB

Open: Monday to Friday 9am—5pm,
Saturday 10am—5pm, Sunday 10am—4pm

Tel: 01743 588458 or 01743 442642

info@reviive.co.uk

Reviive is a community interest company and is a partnership between the Furniture Scheme and the Shropshire Housing Alliance. Both charities are committed to relieving poverty and protecting the environment and supporting a range of people in need, including victims of domestic violence, families living in poverty through unemployment and those excluded through disadvantage.

Reviive stores can be found in Shrewsbury, Oswestry, Telford and Chester for more information see their website www.reviive.co.uk

rockspring community centre

WHAT'S ON AT ROCKSPRING

Day	Activity	Time	Cost	Other Notes
Monday	Family Drop in - under 5'	9.30am – 11.30am	FREE	Sure Start 01694 723465
	Baptist Church Lunch Club 2 nd Monday of the month	12 noon – 2pm	£2.50	
Tuesday	Basic Flower Arranging	10am – 12pm	DONATION	Every two weeks
	Homework Club (9 – 14 yrs)	3.30pm – 4.30pm	FREE	Richard: 07710086395
Wednesday	Tai-Chi	10am – 12 noon		Susan: 01584 874296
	Bumps & Babes – Family Room	10am – 11.30am	FREE	Sure Start 01694 723465
	Rockspring Community Choir	7.15pm – 8.45pm	£2 sub	Chris: 01584 874922
Thursday	Drop in – staff on hand from the Multi Agency Team, Benefits Advisor, Community Housing Officer, IT help with emails, word processing, file management etc Credit Union (12.30 – 3.30pm)	10.30 -12.00pm	FREE	
	LUNCH – it's either homemade soup, jacket potato, cottage pie, sausage & mash or pasta etc! and cake – all welcome! Lunch is FREE for Community Garden volunteers.	12.15pm	£1.50	
	Childminder's – Family Room	10am – 12pm	FREE	Sure Start 01694 723465
Friday				
Saturday	Marches Polio Group – 2nd Saturday every month (except Dec & Jan) – bring and share lunch	12pm - 3pm		Dorothy Crook: 07890 972011

Rockspring Holiday Scheme – free activities take place on Tuesdays every school holiday for 8 – 14 year olds.

Ludlow Churches provide Emergency Food Parcels (by referral only through Housing Officer or Citizens Advice Bureau at Ludlow Youth Centre, Lower Galdeford, Ludlow Tel: 08444 99 11 00) these can be collected: Monday, Wednesdays, Thursdays & Fridays 11am – 1pm.

Rockspring Community Garden – run by volunteers for the community. To offer help contact: Chris Perkins - 01584 874922

Community Directory, information on health and care services available to people living in the Southern Shropshire area.
Contact: Elaine Duggan 01584 874922 or 07896642018 Email: elaine@furniturescheme.co.uk

August 2014

Sandford Road, Ludlow, Shropshire SY8 1SX
rockspring@furniturescheme.co.uk www.furniturescheme.co.uk

**01584
874922**



Community Garden

DROP IN THURSDAYS AT ROCKSPRING

Access tenancy support, benefit advice from Bromford Support and Sustain, every Thursday between 11am and 12.30pm, with Rach Paskin and Sue Wilson, this is available to all, private tenants, home owners and Housing Association tenants. Every third Thursday between 11am and 1.30pm you can access Energy Advice.

IT help and support is available from 9.30am to 12pm learn how to use the internet, apply for jobs online, sending emails etc.

DUE TO THE HALL FLOOR BEING REPAIRED THE COMMUNITY LUNCH WILL NOT TAKE PLACE FOR 3 WEEKS 18th, 25th SEPT & 2nd OCT. At 12.15pm we have a Community Lunch which only costs £1.50—it's either jacket potato, cottage pie, sausage & mash, chicken pie or spaghetti bolognese (requests welcome within reason!) and slice of home made cake. Everyone welcome, no need to book, but if you are vegetarian it would be useful to know.

Volunteers are welcome to come and work in the Community Garden between 10am and 4pm. **All garden volunteers will have lunch for FREE.**

ADVANCE NOTICE monthly cookery sessions commencing 18th September 10am—12.30pm further details coming soon.



ROCKSPRING COMMUNITY CENTRE

HIRE PRICES



RATE PER HOUR OR PART THEREOF	WEEKDAYS 9AM-5PM	WEEKDAYS 5PM-9PM	SATURDAYS 9AM-5PM	SATURDAYS 5PM-9PM
COMMUNITY GROUPS MAIN HALL - SEATS 60	£8.00	£12.00	£12.00	£15.00
PRIVATE HIRE MAIN HALL - SEATS 60	£10.00	£15.00	£15.00	£20.00
COMMUNITY GROUPS TEME - SEATS 20 - 25	£7.00	N/A	N/A	N/A
PRIVATE HIRE TEME - SEATS 20 - 25	£9.00	N/A	N/A	N/A
COMMUNITY GROUPS CORVE - SEATS 10 - 12	£6.00	N/A	N/A	N/A
PRIVATE HIRE CORVE - SEATS 10 - 12	£7.00	N/A	N/A	N/A

Payment in advance is requested for all private parties.

Please note, the centre is not licensed to sell alcohol.

To book a room or for more information contact: 01584 874922 or email rockspring@furniturescheme.co.uk



Fun with Flowers

Basic flower arranging at Rockspring



Tuesdays: 9th & 23rd Sept
14th October,
11th & 25th November,
9th December
10am - 12 noon



come and relax,
have a coffee and a chat,
watch, then have a go!
everyone welcome

To book your place or for more information contact:
Maria or Kristine 01584 874922

just
CREDIT UNION LTD.

at Rockspring Community Centre

Safe as a bank

Just for you

Just for savings

Just for loans

Just for bank accounts

**Find out about us - join
Thursdays 12.30 to 3.30pm**

Shirehall • Abbey Foregate • Shrewsbury • SY2 6ND
Tel: 01743 252325 • Fax: 01743 252937

www.justcreditunion.org



ROCKSPRING HOMEWORK CLUB

every Tuesday

3.30—4.30pm

Volunteers wanted if interested please
contact Richard on 07710086395



"What a load of amateurs!"

Welcomes new members.

We meet every Wednesday at the Rockspring Community Centre, Ludlow
7.15pm- 8.45pm- Subs only £2.00 per week.

Singing songs from Musicals to Traditional -In fact anything that
takes our fancy! Come along and join in the fun.

For more information please contact **01584 874922**
Christine Perkins - chrisp@furniturescheme.co.uk





The **Library** at CasCA, opening hours are Monday to Thursday 9am – 9.30pm, Friday 9am – 7.30pm & Saturday 9am – 12 noon.

Craven Arms and District History Group are based here on Friday mornings 10am–1pm, just drop in to view parish records, old photographs, maps, documents etc. For more information contact: Russell Jones 01584 861547

The **Cafe @ CasCA** is open on **Mondays** and **Wednesdays 9.30am – 2.30pm** offering sandwiches, Panini's, cakes and more!

Children's Party Packages are available, see our website for more details or call into the Centre and pick up a leaflet.

We have a **Bouncy Castle** which we hire out for parties held at the Centre.

WALK IN WEDNESDAYS AT CasCA 9am–12 noon



Helen & Sue at the Drop-in

Support team from Sustain Consortium (Main office based at The Gateway)

Drop in and meet members of the team, who will be available between 9am and 12 noon every Wednesday morning at Craven Arms Community Centre, to help with Housing issues, Debt related problems, Benefit advice.

It may be as simple as helping someone make a phone call, or if long term support is needed, this can be arranged. If the Team do not know the answer, they can refer onto other Agencies that

do! The service is free, confidential and open to everyone living in Craven Arms and surrounding area.

KNIT AND NATTER bring your knitting and have a cuppa while having a natter!

FREE IT support also available.



Day	Activity	Time	Cost	Other Notes
Monday	Child Care & Pre-School			Call 07891106669
	Ukelele & Guitar Lessons	6.30pm – 8.30pm	£5	Booking essential at CasCA
	KFA Karate	5.30 - 6.30pm		All Ages Tony – 07773 506468
	Belly Dancing	6.00pm – 7.00pm	£4.00	Kath 07977801522
	CA Men's Chorus	7.30 - 9.00pm		Not in Jan or Aug

Tuesday	Indoor Bowls	2.00 - 4.30pm	£3.00	October – March
	Girls Group	5.00 - 7.00pm	FREE	Call 01584 874723
	Hula Hoop Exercise	7.30 - 8.30pm	£4.00	

Wednesday	Fit & Fun Boccia Group	10.00am – 12.00 noon	£1.50	Hayley 07530 466 730
	Yoga	11.00 - 12.30		Andrea Ford 01694 724317
	Child Care/Pre-School			Call 07891106669
	Tea Dance	2.00 - 4.00pm	£2.50	2 nd & 4 th Wednesday
	CA Football	5.30pm and 6.30pm		Under 9's October-April
	Slimming World	5.30pm and 7.30pm	£5.00	
	Guitar/Keyboard Lessons	6.30pm		mtl_tuition@btinternet.com
	Skills for Life	7.00 - 9.00pm	FREE	
	Walk in Wednesdays including free IT Support	10.00 - 2.00pm	FREE	Pop in for tea/cake and a natter.

Thursday	Zumba Gold	11.00am-12.00pm	£3.50	Back in September
	Tai Chi	1.30-3.30pm		Call Jenny 01743791427
	Gymnastics	3.45pm onwards	£3.00	4-14 yrs
	Youth Club	6.00 - 8.00pm	FREE	Chris Perkins 01584 874723
	Marches Branch Embroiderers Guild	7.00pm	£1.50 (member) £5.00 (visitors)	1 st Thursday of the month
	CA Football	7.30 - 8.30pm		Under 11's October-April

Friday	Child Care/Pre-School			Call 07891106669
	Netball	4.30 - 5.30pm		U 11's
		5.30 - 6.30pm		U 14's
		6.30 - 7.30pm		U 16's
	CA Brownies	5.45pm		7 yrs +

Saturday	Empathy	2.00 - 4.00pm		Every Other Saturday
----------	---------	---------------	--	----------------------

Badminton and Volleyball are available every day and evening upon request Tennis: £8.00 per Court Badminton: £8.00 Per Court Volleyball: £8.00 Per Court. CALL 01588 672847

AUGUST 2014

HIRE CHARGES FOR CasCA



Room		Corporate per hour	Community per hour	Youth per hour
Welsh Mountain (Sports Hall)	350 Theatre Style 200 Boardroom style	£30.00	£20.00	£15.00
Badminton Court		-	£8.00	-
Bowls per individual		-	£2.60	-
Children's party hire		-	£15.00	-
Shropshire	200 Standing/Theatre 170 seated	£25.00	£17.50	£15.00
Plowden	50 Theatre Style 30 Boardroom Style	£16.00	£12.00	-
Clun	20 Theatre Style 10 Board Room	£10.00	£5.00	-
Kerry	30 Theatre Style 15 Board Room Style	£13.00	£10.00	-
Playroom/pre-school		£13.00	£10.00	£6.00
Pavillion		£15.00	£10.00	£5.00
Small Office			£7.50	
Kitchen		£15.00	£7.50	
Badminton/Tennis/Table Tennis/Volley Ball		£8.00		
Bowls per individual		£3.00		
Tea Dance per individual		£2.50		
Art Group per individual		£1.50		
Children's Party Hire		Weekdays £15.00	Weekends £20.00	Bouncy Castle and room hire 3 hrs £100.00
Conference Hire (full use of building)		£1000 per day	£500 per day	

August 2014



**Craven Arms
Community Centre
Art Group**


Every Monday, 1.00PM—3.00PM
starting 12th May
For more details, please call
01588 672847



£1.50 INCLUDING TEA, COFFEE & BISCUITS
(Please note, members wishing to
come will need to bring their own
materials and equipment)



PLEASE NOTE these are not art
classes but more for getting together
and sharing ideas.




BELLY DANCING

*Explore and discover the wonders of middle
eastern dancing at Craven Arms Community
Centre.*

*All ages welcome, come along every Monday
At 6.00pm—7.00pm, £4 per hour.*

*If you need any more information, contact
Kath (Falina) on 07977 801522*



LETTER TO PHILIP DUNNE FROM PAUL SMITH—CENTRE USER

12/08/14

Dear Philip Dunne,

Hope you are well. I am writing today to advise you of the fantastic job Rocksring Community Centre does in our community.

The services they offer are invaluable. The internet services, telecommunication services they provide, the advice, the good will, the food bank and other services they provide are invaluable. The community spirit is strong and aspirational.

All the services they are providing and trying to provide are helping people learn IT skills, gain confidence, building CV's, job hunting and providing helpful information to get people back into work and rebuild their lives. Rocksring is helping people with the tough but necessary changes to the welfare state.

On a personal note, the last three years have been traumatic for me since sustaining a work injury that is with me for life.

Rocksring have helped me back into work and helped me reshape my life, allowed me to use telephone facilities, internet facilities and general stationary facilities to both seek and sustain work as well as helping me deal with utility companies and work and benefit issues.

Sadly, Rocksring Community Centre needs far more financial support and assistance and it would be good if you took a moment of your time to see how you could help with either corporate sponsorship, community grants and more resources for the centre. They badly need more IT resources, web design and IT courses would help some members of our community to reach there aspirations, a DWP advisor would not go a miss either, Job Club and all associated materials that go with that.

I would personally like to thank Maria Darcy Centre Development Manager also Elaine Duggan Community Directory, Rob Gardner Caretaker and hope you find a few minutes of your time to pull some strings or at least offer advice and visit the centre on a regular basis to see how you can help this essential community Organization.

Please feel free to pass on my comments to Rocksring Community Centre, Sandford Road, Ludlow SY8 1SX for all the help and advice they have given me and many others.

Yours sincerely, Paul Smith

THANK YOUS

04/07/14 Rocksring Community Centre—Absolutely great. In 20 years of organising such events I never had such a warm and friendly welcome. Nothing too much trouble. S.H.

04/07/14 Just to let you know I've completed my CPC. A BIG THANK YOU and to SSFS for the help, support and funding to complete and hopefully secure full time employment. R.S.

11/08/14 I've recently visited your Ludlow Weeping Cross Lane store. I purchased a beautiful fridge freezer from you. I feel it is necessary for me to let you know just how helpful and professional the staff were. All the staff were extremely helpful and knowledgeable and a pleasure to deal with. I would especially like to thank Simon Magill and John Jones.

What's On in Mortimer Forest Summer 2014

Stay and Play with your child and access information, advice and support at our groups.....

Bumps and Babes

(For expecting families and children under 1 year)



Rockspring Community Centre,
Ludlow
Wednesday's
10.00-11.30am

Rhymetime



Ludlow Library
SY8 2PG
10.30-11.00am
First Tuesday of the month

Dads and Male Carers Group

(For all dads and male carers with children under 5 years)



Ludlow Junior School
1st Saturday of the month
10.00am-12.00pm

For future dates please contact the main office on 01694 723465

Family Drop In

(For families with children under 5 years)



Rockspring Community Centre, Ludlow
Monday's 9.30-11.30am

Ludlow Infants School
Tuesday's (term time only)
9.30-11.30am

Ludlow Rockspring Community Centre
Tuesday's 1.00-3.00pm

Craven Arms Children's Centre
Wednesday's 9.30-11.30am

An Introduction to feeding Your Baby



Advice, information and support about feeding your baby for expectant mother and fathers

An opportunity to answer all your questions and explore the benefits of breast feeding for you and your baby

Rockspring Community Centre,
Ludlow
Wednesday's 11.00-11.30am
23rd April 2014
5th June 2014
16th July 2014

Health Visitor Advice line:
01588 676 321

Make Money Matters

(With the benefits option team)



30 minute appointments from
1.00-3.00pm (booking essential)

Rockspring Community Centre, Ludlow

Please contact the main office on 01694 723465 for future dates in 2014

IT access is available at these various points:

Craven Arms Discovery Centre
Library

Craven Arms Community Centre
Rockspring Community Centre
Ludlow Library

The staff and where they work

Rockspring Community Centre, Sandford Road, Ludlow SY8 1SX Tel: 01584 874922

Jean Jarvis MBE—Chief Executive
 Rosemary Collie—Social Enterprise Advisor
 James Cooper—General Manager
 Gill Pitt—HR Training & Development Manager
 Elaine Duggan—Community Directory & Marketing
 Maria Darcy—Community Centre Development Manager (Tue & Thur)
 Kristine Squires—Administration Assistant/Reception (Mon, Wed & Fri)
 Christine Perkins—Community Engagement Worker
 Adrian Coble—IT Technician & Tutor (Thurs)
 Lynda Hoad—Finance Officer
 Amy Morling—Management Team Support
 Rob Gardner—Caretaker

jean@furniturescheme.co.uk
 rosemary@furniturescheme.co.uk
 james@furniturescheme.co.uk
 gill@furniturescheme.co.uk
 elaine@furniturescheme.co.uk
 maria@furniturescheme.co.uk
 kristine@furniturescheme.co.uk
 chrisp@furniturescheme.co.uk
 adrian@furniturescheme.co.uk
 accounts@furniturescheme.co.uk
 amy@furniturescheme.co.uk

Renaissance Centre, 7-8 Tower Street, Ludlow SY8 1RL Tel: 01584 877751

Di Hyde—Work Placement Officer
 Paul Francis—Statistics Officer
 Richard Carpenter—Renaissance Centre Co-ordinator
 Matt Duley—Renaissance Centre Systems Administrator

diane@furniturescheme.co.uk
 paul@furniturescheme.co.uk
 richard@furniturescheme.co.uk
 matthew@furniturescheme.co.uk

Carpentry Workshop, Ludlow Mascal Centre, Friars Walk, Ludlow SY8 1RZ Tel: 01584 877706

Stefan Laird—Workshop Supervisor
 Graham Lambourn—Volunteer Support Worker

carpentry@furniturescheme.co.uk

Re-use Centre, Weeping Cross Lane, Ludlow SY8 1JH Tel: 01584 877788

Simon Magill—Re-use Centre Manager
 Mike Cornhill—Warehouse Team Leader
 John Jones—Customer Services Team Leader
 Julie Magill—Re-use Centre Team Leader
 Tim Stevens—Van Driver
 Kevin Jones—Van Driver/Recycling Officer
 Kevin Gubbins—Van Driver

simon@furniturescheme.co.uk
 mike@furniturescheme.co.uk
 john@furniturescheme.co.uk
 julie@furniturescheme.co.uk

CasCA (Community arts sports Craven Arms), Newington Way, Craven Arms SY7 9PS

Tel: 01588 672847 Email: casca@furniturescheme.co.uk

Maria Darcy, Community Centre Development Manager (Mon/Wed/Fri)
 Alison Kennedy—CasCA Supervisor
 Richard Handley—General Assistant
 Alan Stewart—General Assistant
 Jackie Bowen—Finance Administrator
 Marion Bailey—Domestic Assistant
 Dave Griffin—Volunteer General Assistant/ Handy man

maria@furniturescheme.co.uk

Lorna Odour—General Assistant

Naomi Payne—General Assistant

Adrian Coble—IT Tutor/Technician (Wed)

Alexis Picton—General Assistant

Julie Walden—Domestic Assistant

Clean Cut Services— www.cleancutservices.co.uk info@cleancutservices.co.uk

Michael Bolton Mobile: 07816 510114 Mick Cooney Mobile: 07816 510278

DIRECTORS

Susan McCormack
 Clare Ratcliff

Philip Reckless
 Steve Price

John Aitken

Chris Horton—Company Secretary

Julian Price—Co-opted

Reviive, Unit 4, Knights Park, Battlefield Enterprise Park, Shrewsbury SY1 3AB Tel 01743 588458

Reviive, Trench Road, Telford TF2 8AA Tel: 01952 217300

Reviive, Sovereign Way, Chester CH1 4QJ Tel: 01244 297396

Reviive, Unit 1 Mile Oak Industrial Estate, Maesbury Road, Oswestry SY10 8GA Tel 01691 679817

Registered Office: The Renaissance Centre, 7-8 Tower Street, Ludlow, SY8 1RL
 Registered Charity No: 1082068 Company No: 4041051